

Imager



LAS 4000

CCD camera-based imaging system for chemiluminescence and fluorescence

Lens: F0.85/43 mm LAS High Sens. Lens

Epi Light: Blue (460 nm), UV (365 nm), White

Filter: Y515, 605DF40 EtBr, 510DF10



Typhoon Trio

Versatile laser scanner for multiplexed fluorescence, phosphorimaging, chemifluorescence

Pixel size: 25 μm , 50 μm , 100 μm , 200 μm , 500 μm , 1000 μm

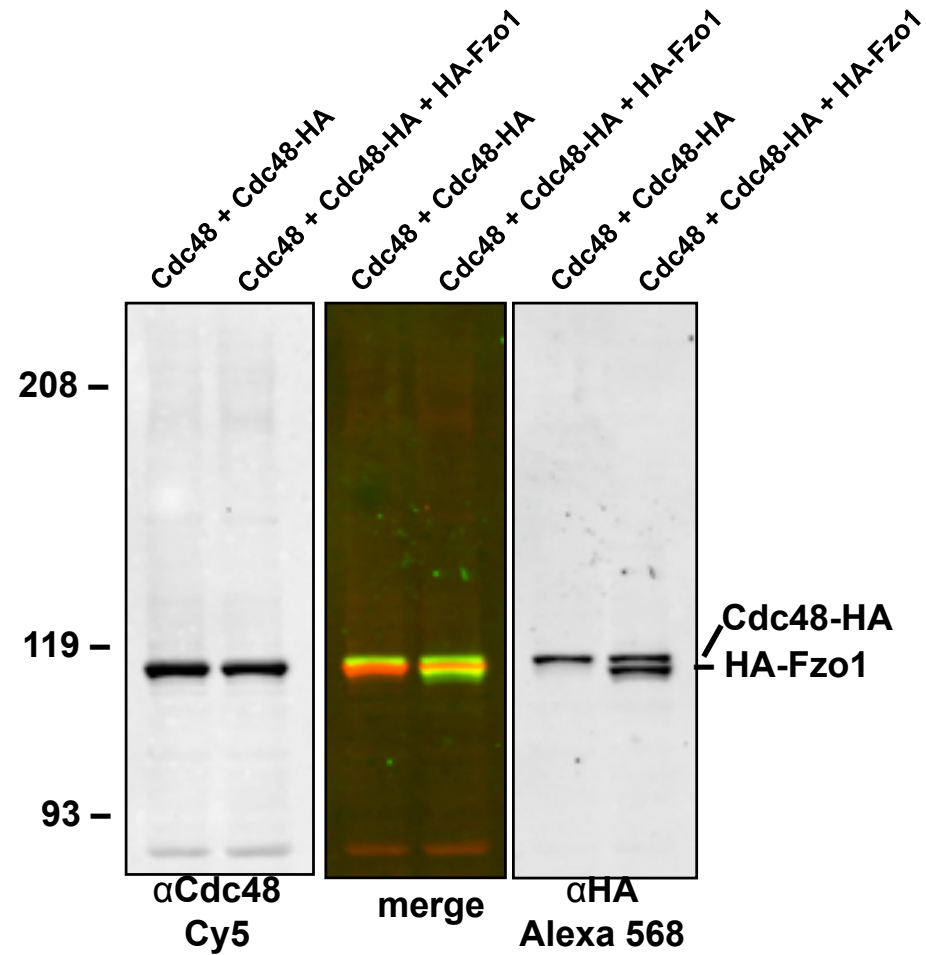
Emission: 488 nm, 532 nm, 632.8 nm

Fluorescence filter: 520BP40 (cy2, Alexa488), 526SP (Fluorescein), 555BP20 (HEX, Alexa 546)

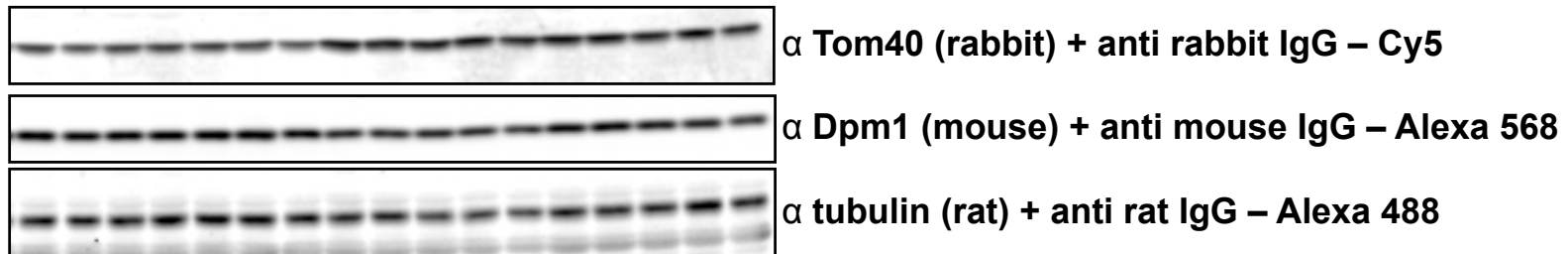
580BP30 (cy3, SYPRO orange), 610BP30 (EtBr, Alexa568), 670BP30 (Cy5, Alexa 647)

Multiplex staining: band assignment

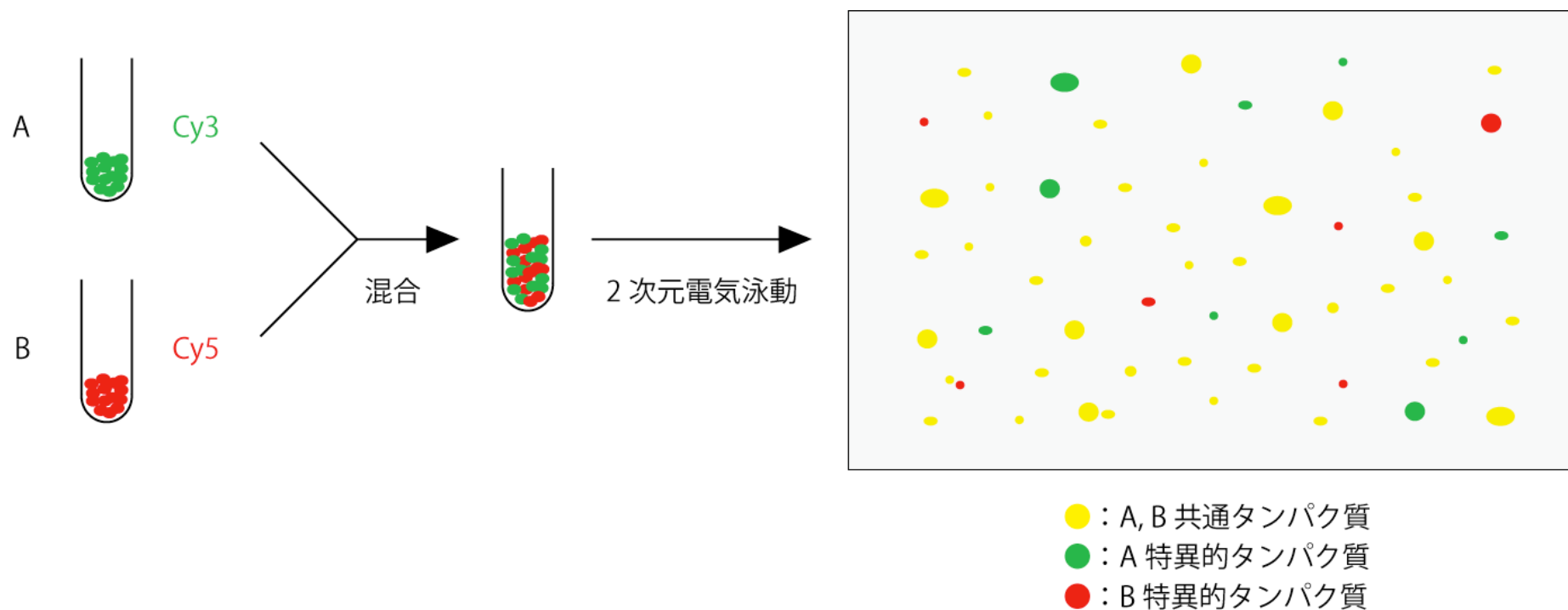
Typhoonでは、宿主の異なる抗体を同時に使うことができる。
したがって、近接バンドのアサインが容易に行うことができたり、loading controlを同じmembraneでとることができる。

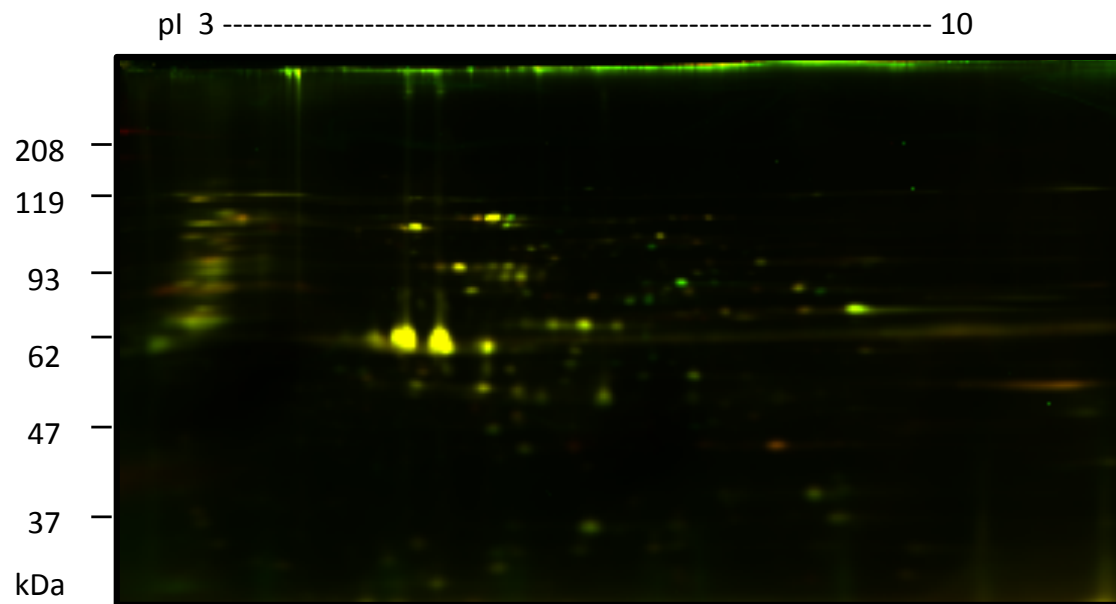
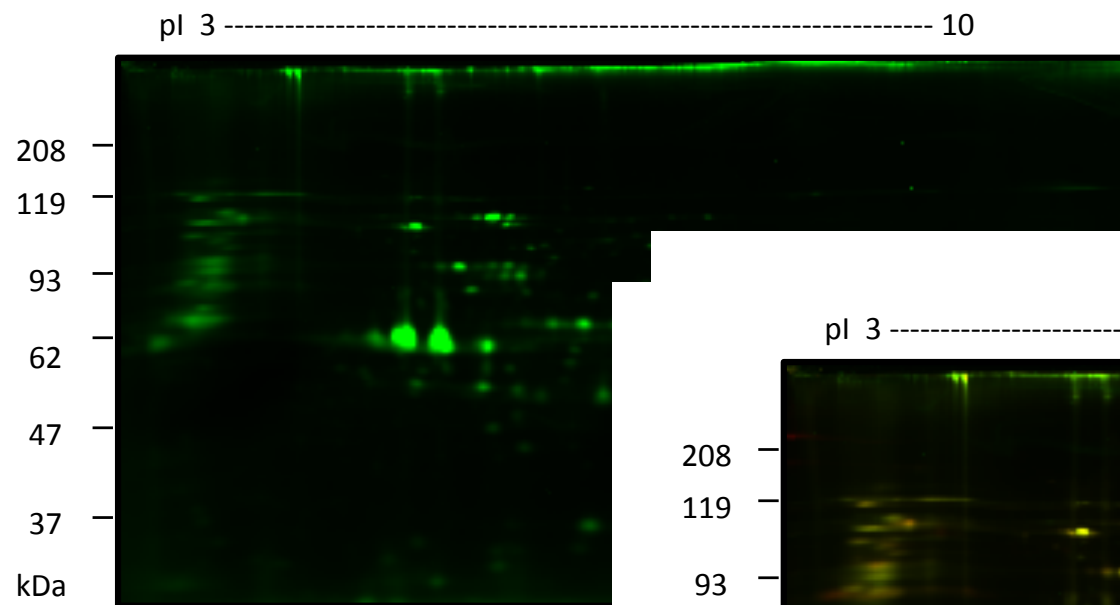


Multiplex staining: loading control

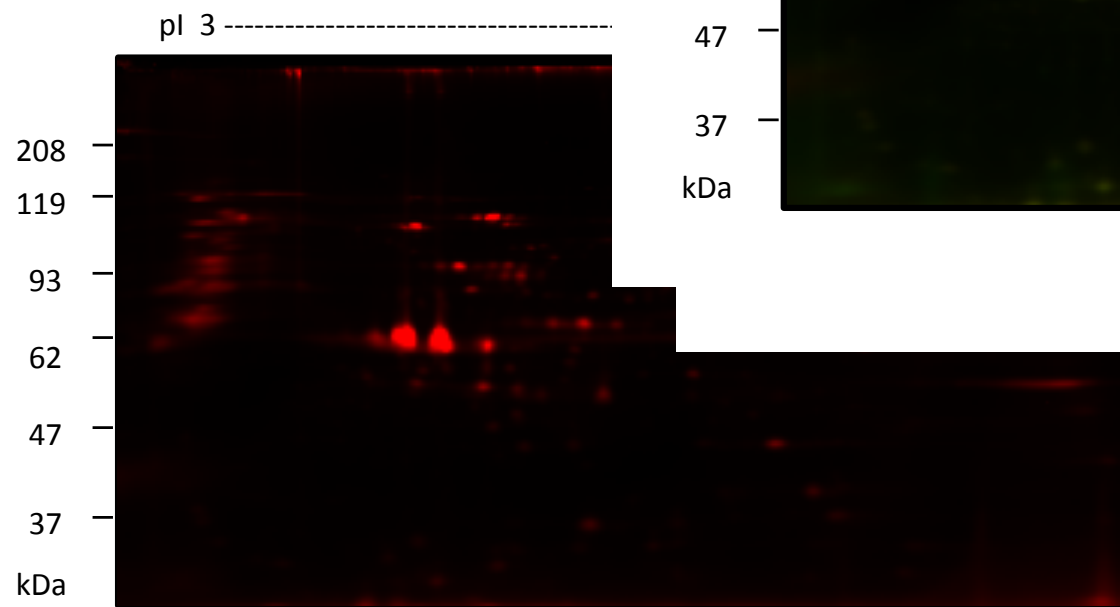


Typhoonによる多重染色蛍光抗体の検出 differential display法(二次元電気泳動)





12% gel



12% gel